

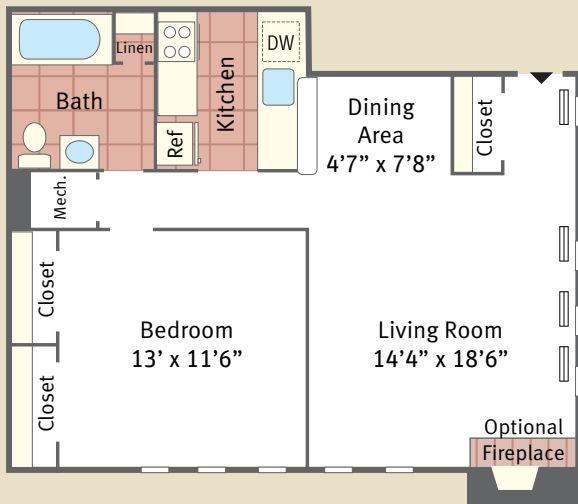


YOUR COMMUNITY, YOUR HOME!

Floorplans

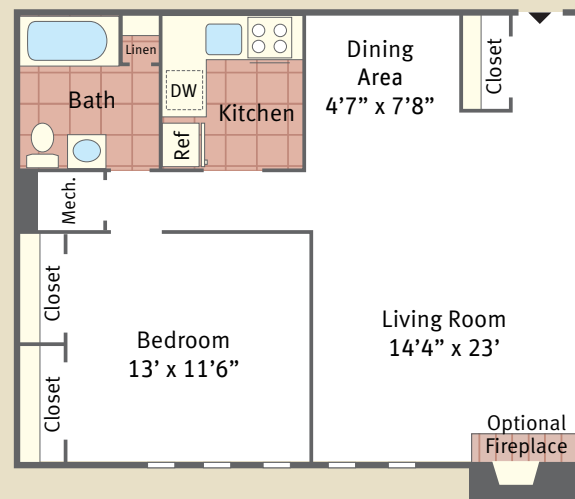
One Bedroom End

750 Square Feet



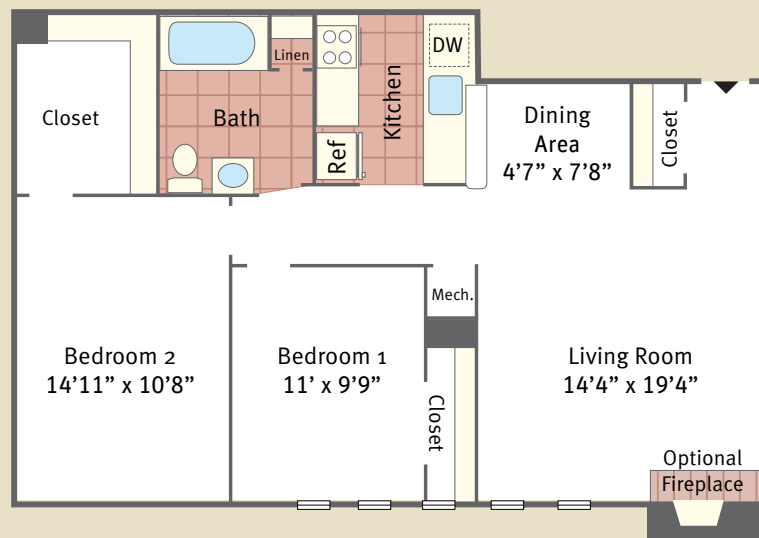
One Bedroom Middle

770 Square Feet



Two Bedroom

850 Square Feet



Floorplans not to scale. Details vary from residence to residence and are not necessarily built exactly as indicated above.

Inverness Apartments

Inverness Apartments is proud to offer large one and two bedroom apartments with the best of modern conveniences and amenities. Every detail of our community was designed to offer you spacious, comfortable living and the pleasures of having a home you will be proud to call your own. Inverness residents enjoy access to a fully-equipped fitness center and a sparkling swimming pool. All of this combined with our service-oriented management team will make Inverness the ideal place for you to live.

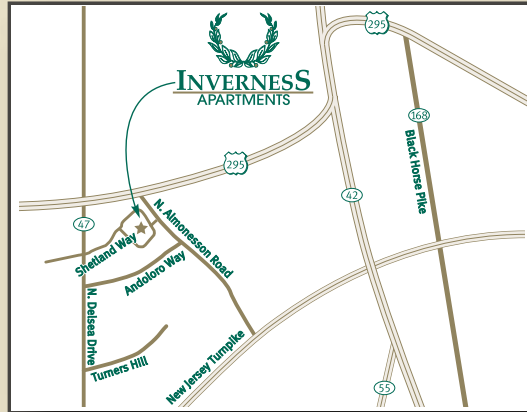
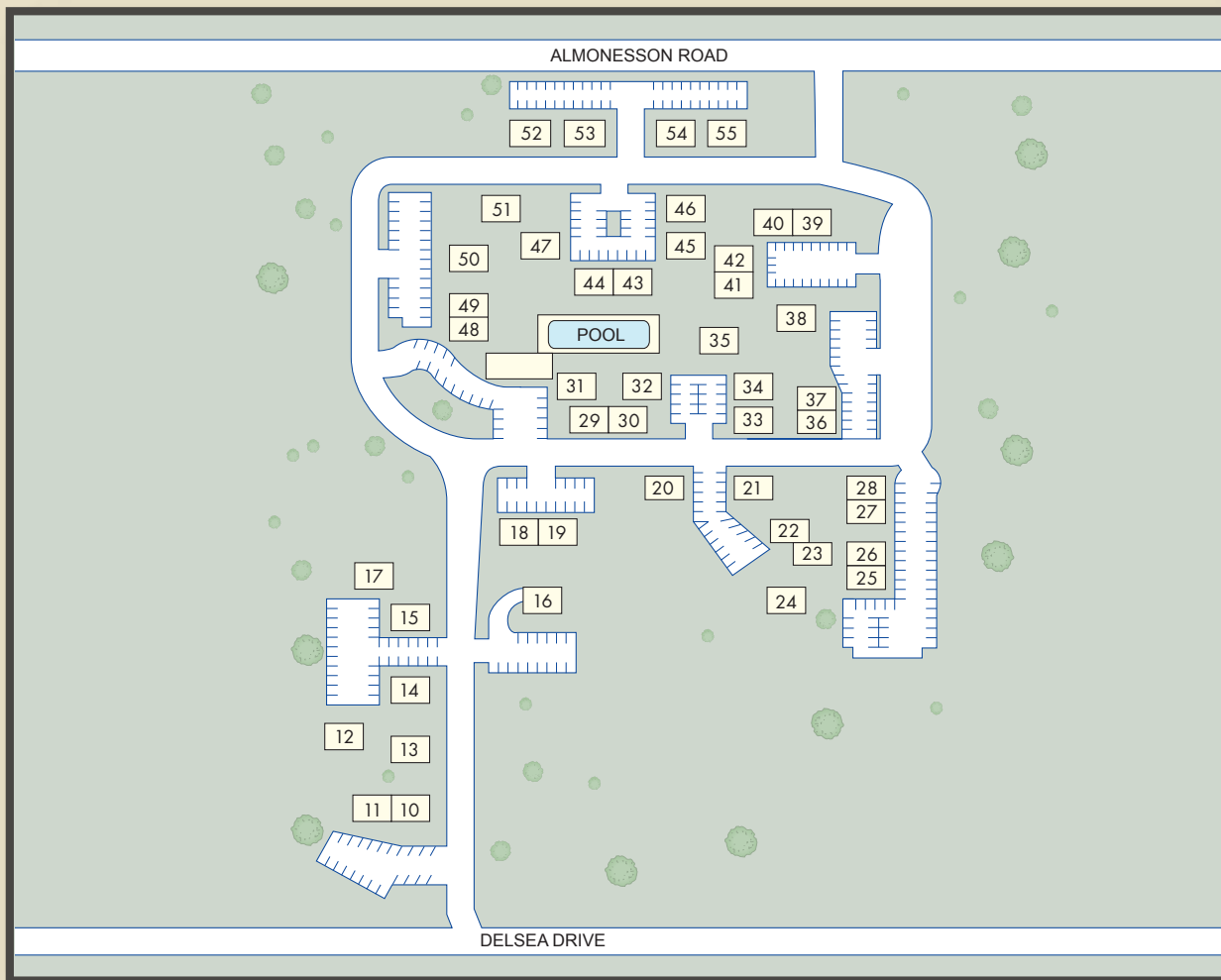
Apartment Features

- Spacious 1 & 2 bedroom apartments
- Fully-equipped modern kitchens
- Separate dining area
- Individually controlled heat
- Central air-conditioning
- Wall-to-wall carpeting
- Fireplaces available in select units
- Cable ready
- Patio or balcony available
- Abundant closet space

Community Amenities

- Fitness center
- Refreshing swimming pool
- Laundry facilities in each building
- Ample off-street parking
- Close to public transportation, schools and shopping
- 24-hour emergency maintenance
- Professional on-site management

Our convenient location puts you right where you want to be. We are located right off of Route 47 with easy access to Routes 42, 55, 130 and 295. We are only minutes from all bridges and a short drive to the Atlantic City resort area. We look forward to you making our community your home!



Directions

From Philadelphia: Take Walt Whitman Bridge to Route 295 South. Take Exit 25A toward Glassboro/Deptford and merge onto Route 47. Follow approximately 0.25 miles, make a left at sign for Inverness Apartments and follow signs to the Leasing Center.

From New Jersey Turnpike: Take to Exit #3, bear right after toll to route 168 North to Route 295 South. Take Exit 25A Glassboro/Deptford and merge onto Route 47. Follow approximately 0.25 miles, make a left at sign for Inverness Apartments and follow signs to the Leasing Office.



Inverness Apartments

1601 Shetland Way • Westville, NJ 08093

(p) 856.686.9800 • (f) 856.686.9001

inverness@altmanco.com



WWW.ALTMANCO.COM